

Booster Sets

CAT5/CAB Washdown Booster Set

The Palmer UK External CAT 5 Washdown Booster Set is designed to prevent backflow contamination of the mains water supply, while maintaining flow and pressure. The unit is compact, lightweight, and housed in a GRP cabinet. Suitable for external use, the unit also has a built in heater for cold weather protection.

Advantages

- Automatic operation
- Simple to wall or floor mount and install
- Easy access and maintenance
- Suitable for external usage

Design

Single peripheral pump and water storage tank housed in a GRP cabinet.

1 outlet connection only

5 metre hose limitation

Applications

- Bin store washdown
- Limited boosting applications

Features

- Stand stock item
- Duty: 0.25 l/s @ 2.2 bar (mid curve)
- Lightweight GRP Kiosk
- Break Tank: 18 litre (4 gallon)
- Cabinet fitted with a thermostat controlled heater
- CAT5 AB Air gap to prevent backflow contamination



Dimensions (approx.)

Width: 610 mm

Depth: 390 mm

Height: 1070 mm

Electrical

Watts: 0.37 kW

Volts: 240 V

Amps: 2.3 A

Approx Weight

30 kg

Please contact our sales team for further information on these and the complete range of water boosting equipment.

PABLRM 15 Pump

New and improved PABLRM 15 Pump which replaces the PABLBM 15 is suitable for use with clean water that does not contain abrasive particles and liquids that are not chemically aggressive towards the materials from which the pump is made. The RYTON and brass pump body construction guarantees against the formation of rust and oxidation. As a result of these characteristics these pumps are suitable for use in industrial applications such as cooling, conditioning and boiler feed. The pump should be installed in an enclosed environment, sheltered from inclement weather.



Performance range:

- Flow rate up to 32 l/min (1.9 m³/h)
- Head up to 40 m
- Class F insulation
- Protection IP X4
- Weight 4.7 kg

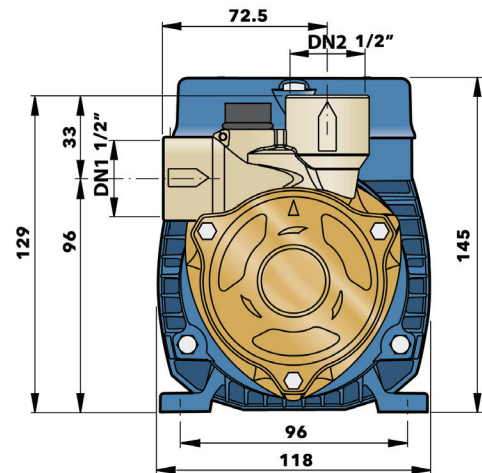
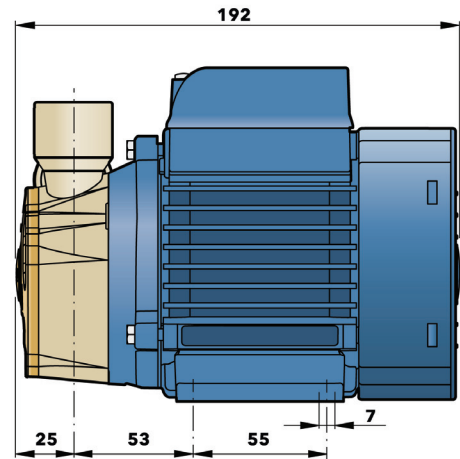
Application limits:

- Manometric suction lift up to 8 m
- Liquid temperature between -10°C to +90°C
- Ambient temperature between -10°C to +40°C
- Max. working pressure 10 bar
- Continuous service S1

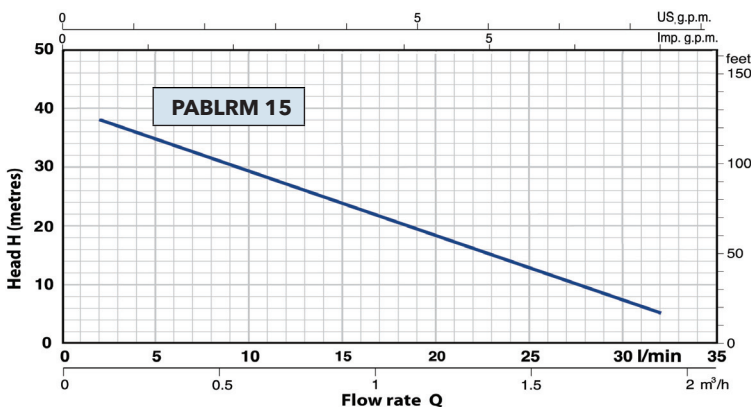
Specifications:

Pump Body	RYTON, complete with threaded metallic port inserts in compliance with ISO 228/1
Body Plate	Brass
Motor Bracket	Aluminium with brass insert, reduces the risk of impeller seizure
Impeller	Brass, with peripheral radial vanes
Motor Shaft	Stainless steel EN 10088-3-1.4104
Mechanical Seal	Seal: MG12-12 Shaft dia 12mm
Materials	Stationary ring: Silicon carbide Rotational ring: Graphite Elastomers: NBR
Bearings	6201 ZZ / 6201 ZZ
Capacitor	230V or 240V: 10µF 450 VL

Dimensions:



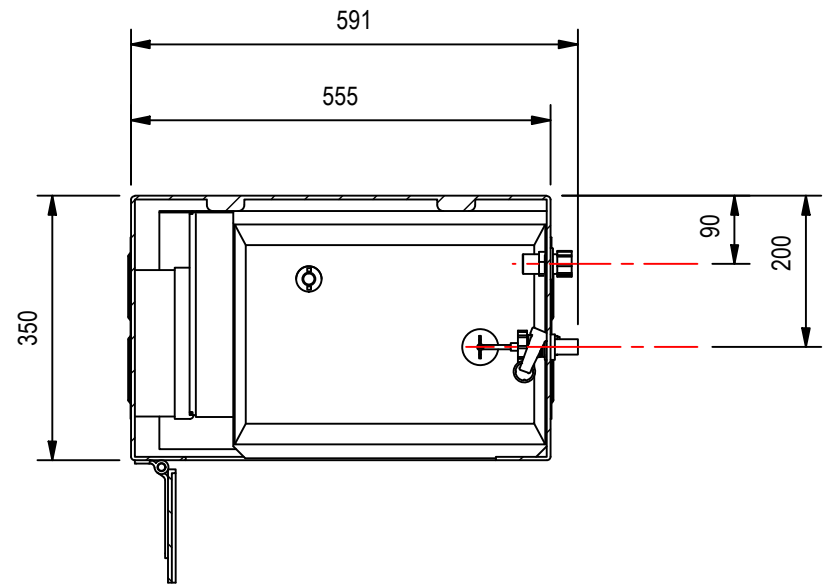
Characteristic curve and performance data 50 Hz n=2900 1/min HS=0m:



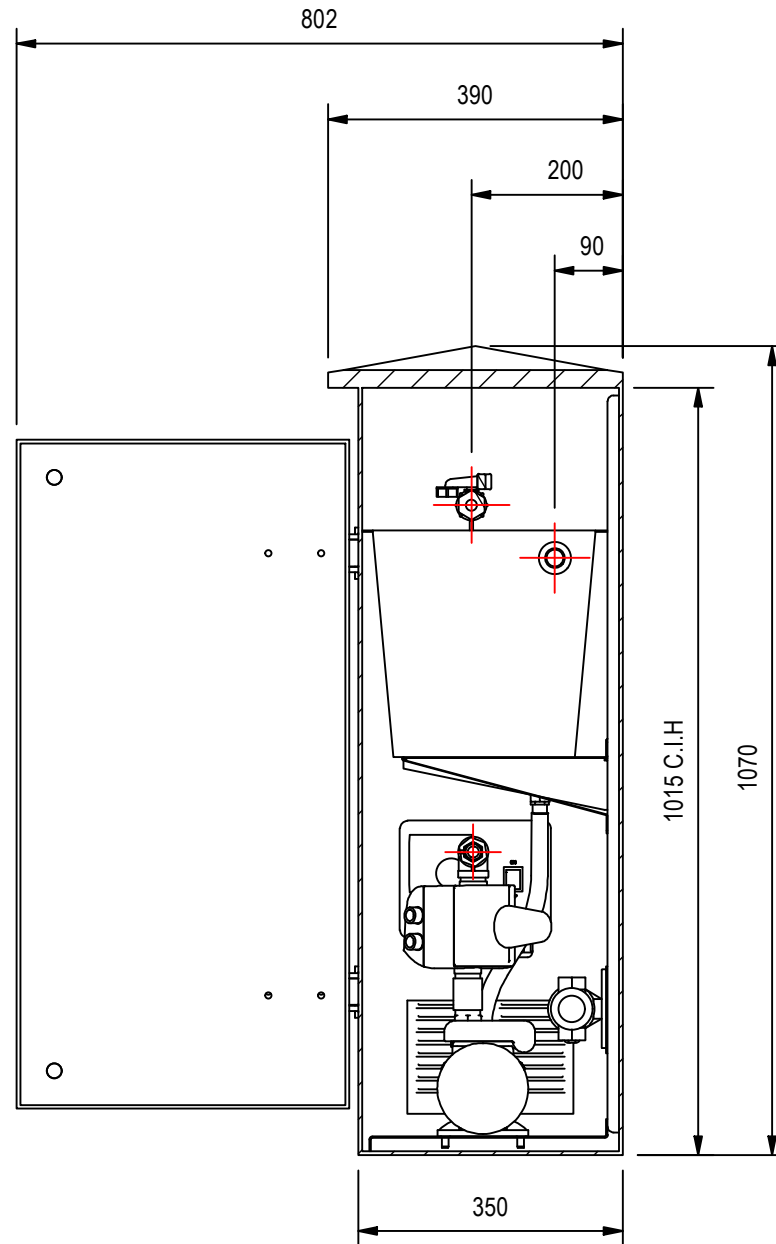
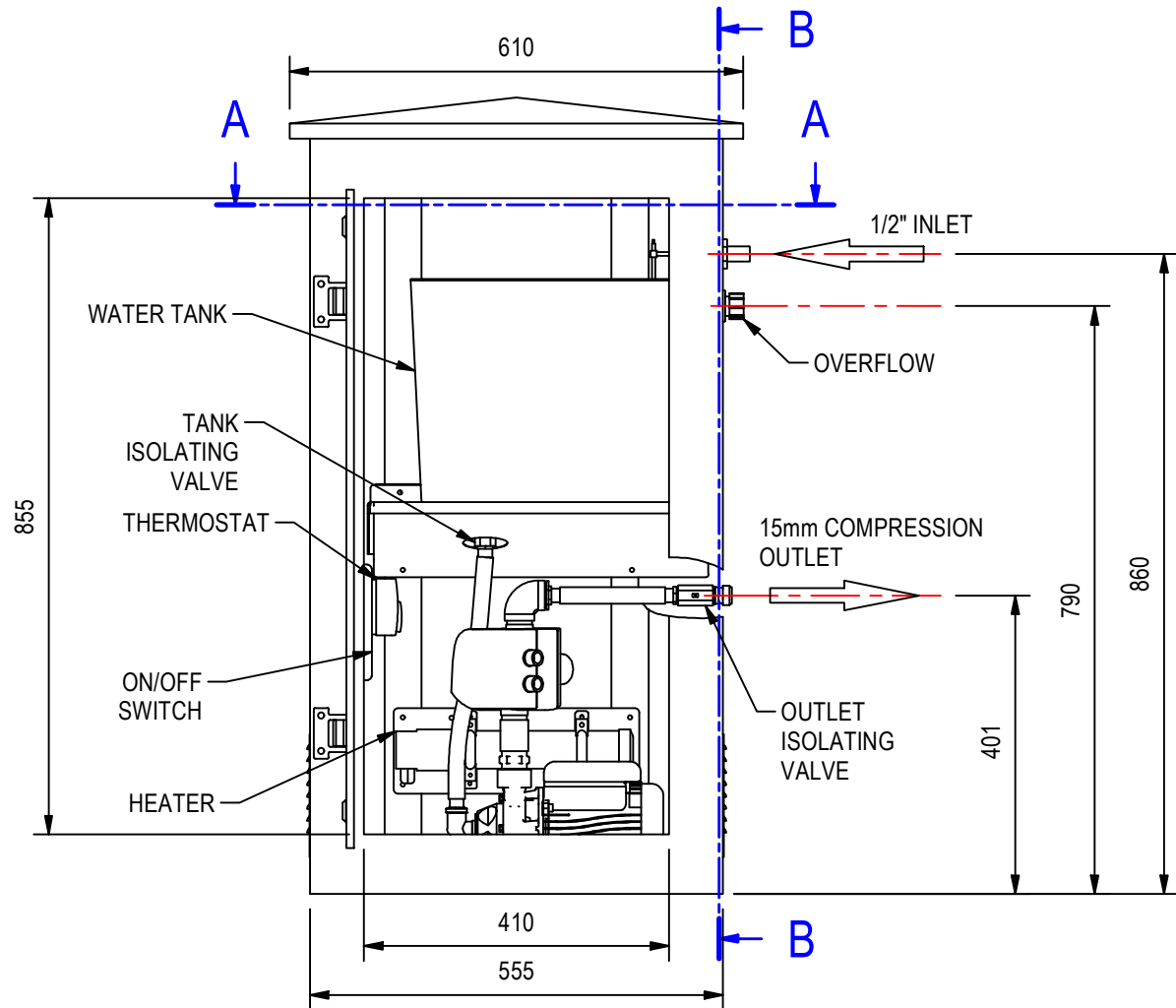
Model	Power		Input current	Q	Flow rate									
	kW	HP			m ³ /h	0	0.1	0.3	0.6	0.9	1.2	1.5	1.8	1.9
Single-phase					l/m	0	2	5	10	15	20	25	30	32
PABLRM 15	0.37	0.50	2.5A	H metres	40	38	35	29	23.5	18	12.5	7	5	

Q = Flow rate H = Total manometric head HS = Suction height Tolerance of characteristic curves in compliance with EN ISO 9906 App. A.

DO NOT SCALE - IF IN DOUBT ASK



SECTION A-A
(SCALE: 1 : 10)



SECTION B-B
(SCALE: 1 : 10)

GRP4 KIOSK
610 W x 1070 H x 390 DEEP

AIR VENT

AIR VENT

CAT5 BOOSTER UNIT FEATURES:-

- STANDARD STOCK ITEM
- LIGHT WEIGHT GRP KIOSK
- ILLUMINATED ON/OFF SWITCH
- DUTY 0.25 L/S : 2.2 BAR
- LOW LEVEL PROTECTION
- BREAK TANK 18 Ltrs (4 GALLON)
- GLYCERINE FILLED PRESSURE GAUGE
- CAT5 AB AIRGAP
- THERMOSTAT CONTROLLED HEATER